

Parking bay edging, Material Block Paving 160mm gauge (240/160/120mm) - Silver Grey textured (to match Conservation Kerb). Tregula Block Paving 240 x 240/240/120mm - Permanent Grey. Refer for information refer to drawing 891_L108)

Marbleite Conservation Kerb 14 x 255 - Silver Grey - 150mm upstand - straight section

Marbleite Conservation Kerb Internal Angle 305 x 145 x 25mm

Liner Bn. (for information refer to drawing 891_L108)

Marbleite Sandstone Natural Sandstone diamond sawn

Marbleite Sandstone Natural Sandstone diamond sawn

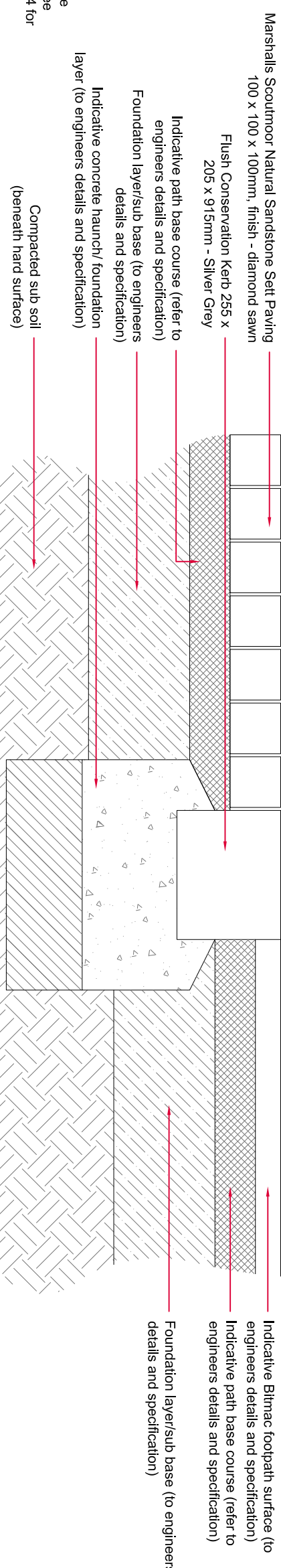
Birnie Footpath Surfacing - sub base to engineer's specification

Marbleite Conservation Kerb 255 x 205mm - Silver Grey - laid flush - straight section

Proposed specimen trees in hard landscape (refer to drawing 891_L114 for tree pit details)

DETAILED AREA 4 - Plan View
1:50 @ A1

SECTION EE - SETTS / CONSERVATION KERB WIDE / BITMAC
1:10 @ A1



Marbleite Sandstone Natural Sandstone Set Paving 100 x 100 x 100mm, finish - diamond sawn

Flush Conservation Kerb 255 x 205 x 915mm - Silver Grey

Indicative path base course (refer to engineers details and specification)

Foundation layer/sub base (to engineers details and specification)

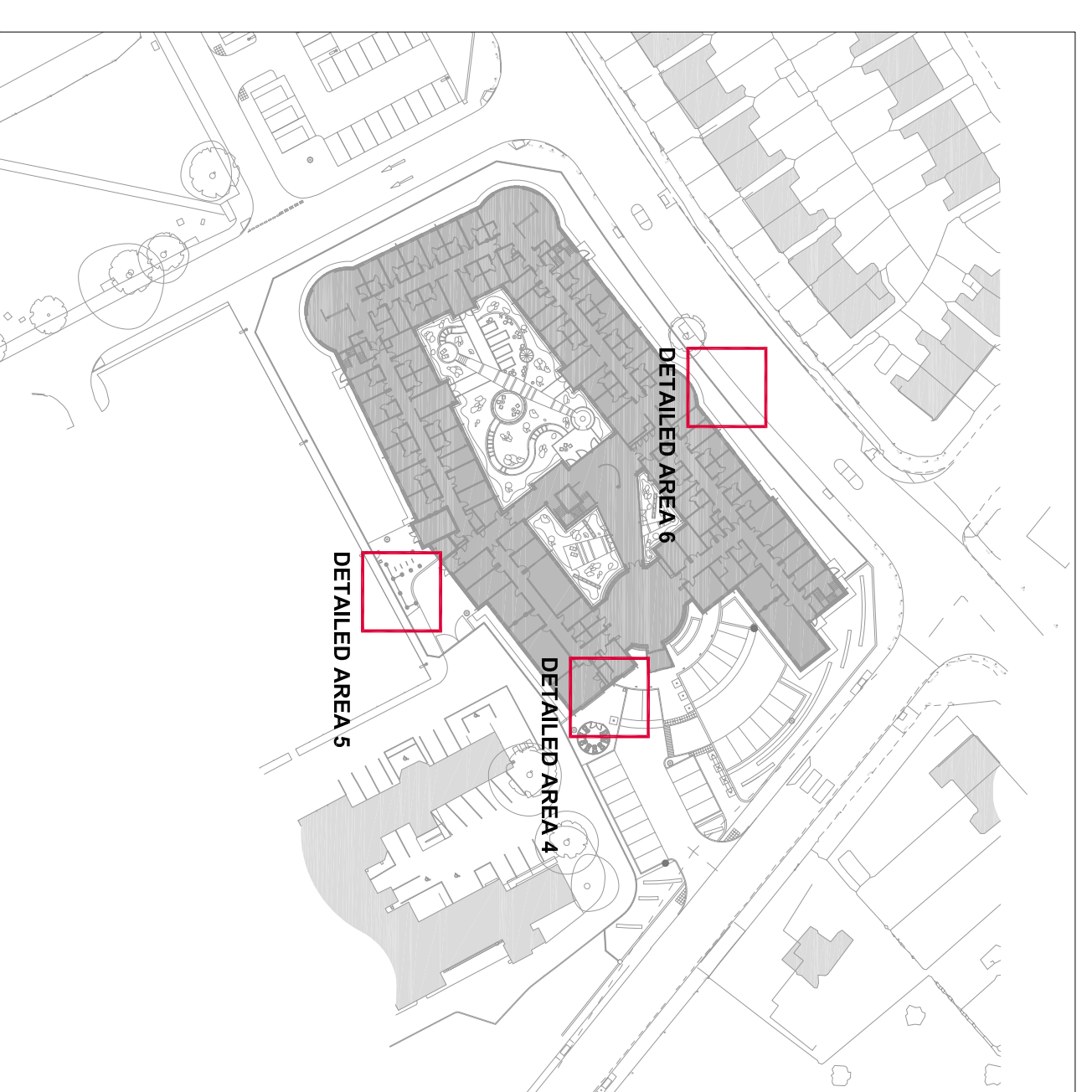
Indicative concrete base (to engineers details and specification)

Compacted sub soil (beneath hard surface)

Indicative Birnie footpath surface (to engineers details and specification) to engineers details and specification)

Foundation layer/sub base (to engineers details and specification)

Indicative location of 1.8m high linear boundary fence - detail to be agreed



DETAIL LOCATION PLAN
NTS @ A1

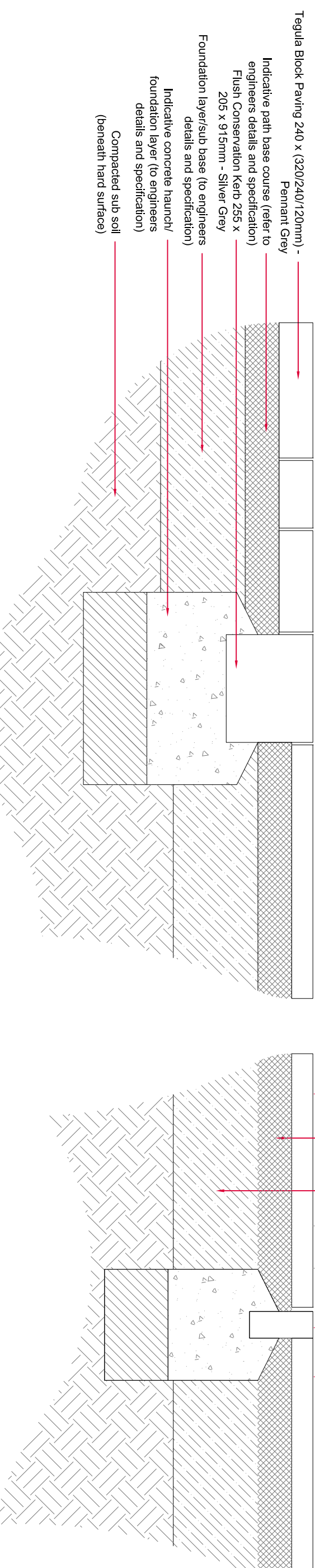
Foundation layer/sub base (to engineers details and specification)

Indicative path base course (refer to engineers details and specification)

Indicative Birnie footpath surface (to engineers details and specification)

Pre cast concrete half battered road kerb (for details)

Existing road to be made good



Tregula Block Paving 240 x (320/240/120mm) - Permanent Grey

Indicative path base course (refer to engineers details and specification)

Flush Conservation Kerb 255 x 205 x 915mm - Silver Grey

Foundation layer/sub base (to engineers details and specification)

Indicative concrete base (to engineers details and specification)

Compacted sub soil (beneath hard surface)

Foundation layer/sub base (to engineers details and specification)

Indicative path base course (refer to engineers details and specification)

Marbleite Sandstone Natural Sandstone Paving, 600mm width x various lengths, UK rounded

Standard pre cast concrete pit kerb, 1500x50x75mm

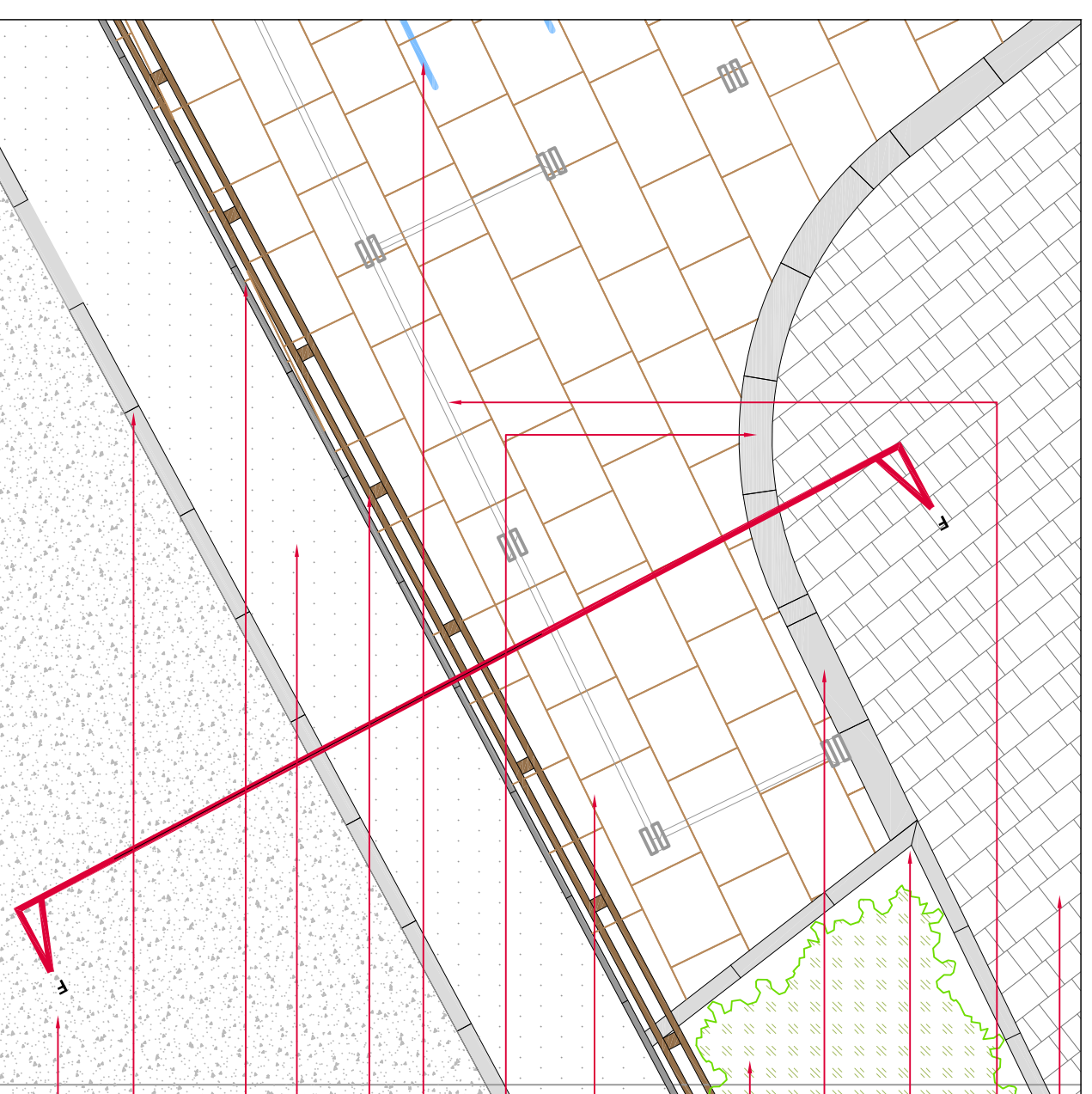
Indicative Birnie footpath surface (to engineers details and specification)

Conservation Pin kerb 63 x 150 x 915 - Silver Grey

Foundation layer/sub base (to engineers details and specification)

Conservation Textured Paving 900 x 300 x 50mm, Colour - Charcoal

SECTION FF - TEGULA / CONSERVATION KERB WIDE / NATURAL SANDSTONE / CONSERVATION KERB WIDE / BITMAC FOOTPATH / BITMAC ROAD
1:10 @ A1



Marbleite Tregula Block Paving 240 x (320/240/120mm) - Permanent Grey

Outline of the atmospheric steel frame - for details refer to Architects drawings/specification

Pre Cast Concrete Half Battered Kerb, laid flush with paving - straight section - mitre joint

Marbleite Conservation Kerb 255 x 205mm - Silver Grey - laid flush - straight section

Mixed ornamental low level shrub/hedge/planter planting (refer to drawing 891_L116 for details)

Marbleite Sandstone Natural Sandstone Paving, 600mm width x various lengths, finish - diamond sawn, UK rounded

Marbleite Conservation Kerb 255 x 205mm - Silver Grey - laid flush - 2,73m radius section

Cycle Stands (for information refer to drawing 891_L108)

Proposed 1.8m high linear boundary fence (detail to be agreed)

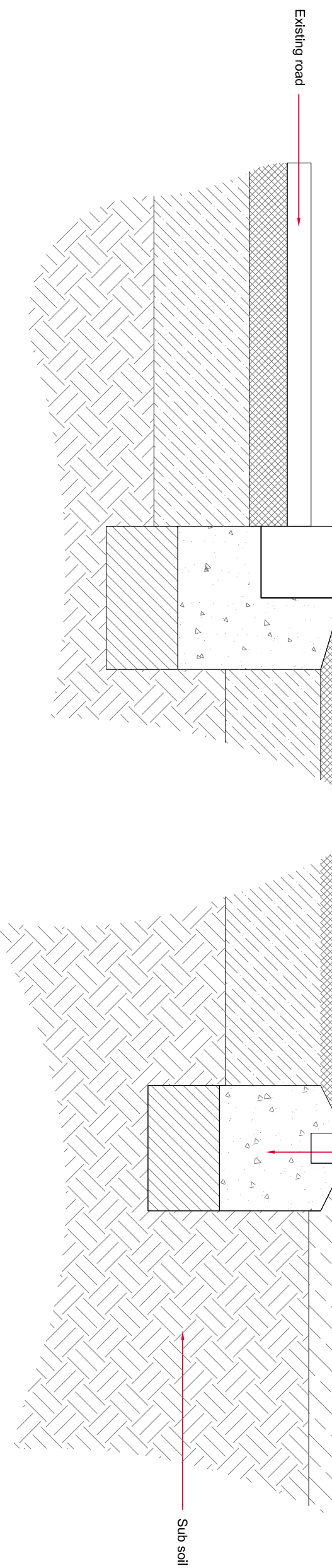
Birnie Footpath Surfacing

Pre Cast Concrete Pin kerb, 150x50x915mm, laid flush with paving and footpath either side

Pre cast concrete half battered road kerb

Existing Road to be made good

DETAILED AREA 5 - Plan View
1:50 @ A1



Existing road

Existing footpath

Proposed boundary railings (for details refer to drawing 891_L122)

Main grass area

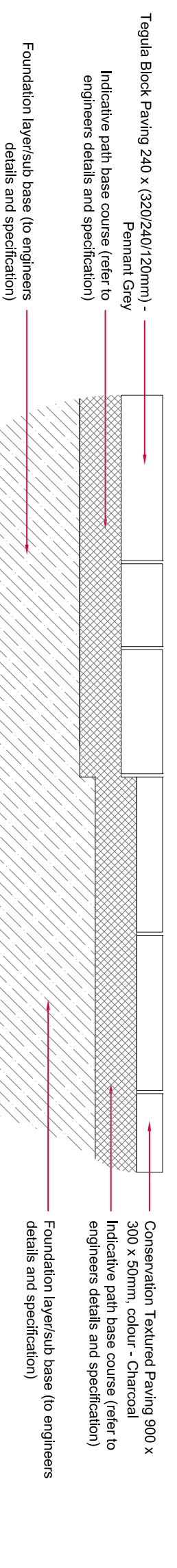
Tactical (for grass area minimum 150mm depth)

Indicative concrete haunch/ foundation layer (to engineers details and specification)

Standard pre cast concrete pit kerb, 1500x50x75mm

Sub soil

SECTION GG - EXISTING ROAD/ EXISTING FOOTPATH/ CONSERVATION KERB WIDE / SOFT PLANTING / CONSERVATION PIN KERB / CONSERVATION PAVING
1:10 @ A1



Tregula Block Paving 240 x (320/240/120mm) - Permanent Grey

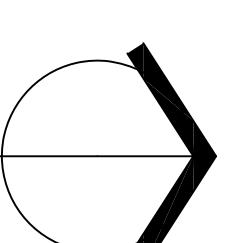
Indicative path base course (refer to engineers details and specification)

Foundation layer/sub base (to engineers details and specification)

Conservation Textured Paving 900 x 300 x 50mm, colour - Charcoal

Pre cast concrete Pin kerb (to engineers details and specification)

Foundation layer/sub base (to engineers details and specification)



| Rev. | By | Chk. | Date |
|------|----|------|------|
| A | | | |
| B | | | |

SAFETY, HEALTH & ENVIRONMENTAL INFORMATION

Consideration should be given to the following:

1. No abnormal risk
1. No abnormal risk
1. No abnormal risk
1. No abnormal risk

CLIENT
South Tyneside NHS Foundation Trust

DWG
Hard Landscape Details 2 of 2

SCALE
As shown @ A1

DATE
01.11.14

DRAWING NO. 891_110

REV. B

southern green
CONSULTING LANDSCAPE ARCHITECTS

221 Durham Road
Gateshead
NE5 2AB

Tel: 0191 440 0034
Fax: 0191 420 3460
Email: info@southerngreen.co.uk